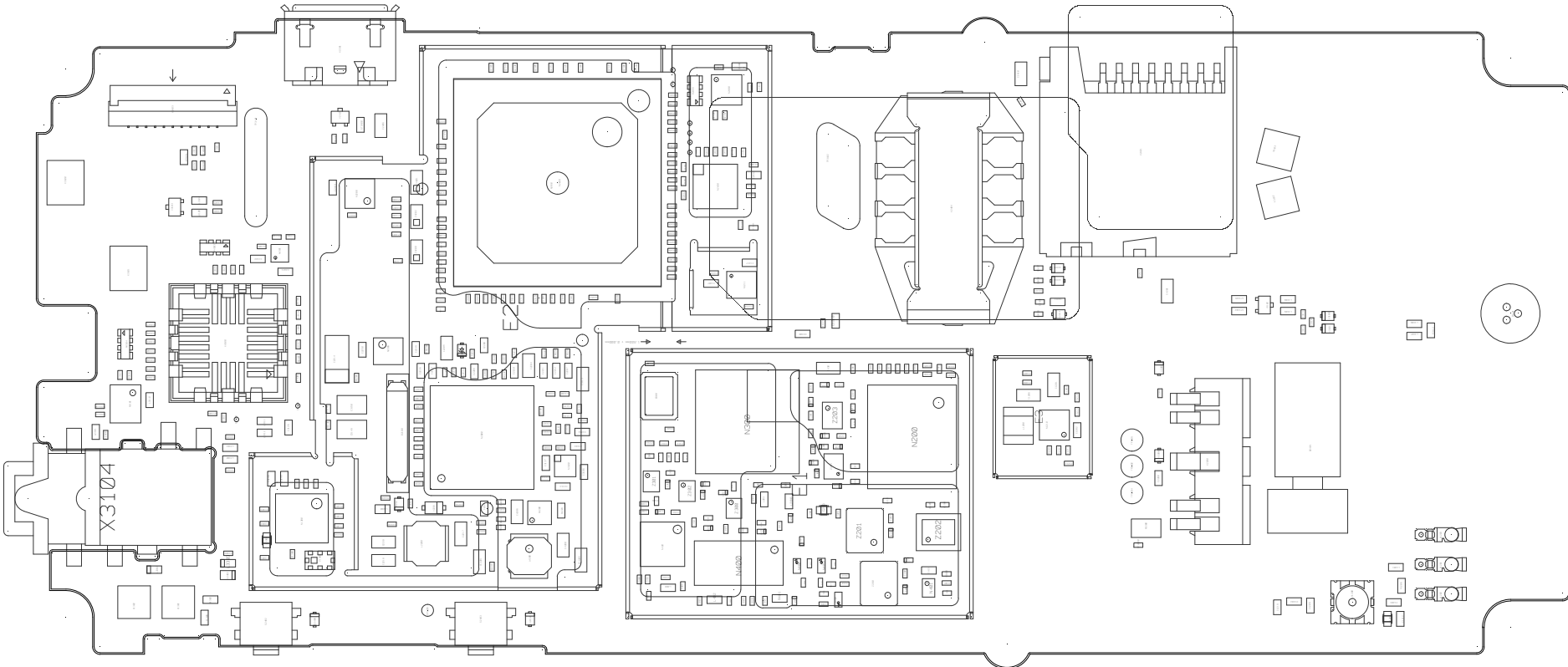




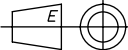
Schematics, Electrical

Applicable for J108i, J108a

Primary Side



Sony Ericsson



Prepared (Also Subject Responsible If Other)

Drawing Rules ISO

Doc Responsible/Approved

| | |
|------|-----|
| Date | Rev |
| | 6 |

Tolerance

Product Name
J108i, J108a

Scale

Units mm

Size A3

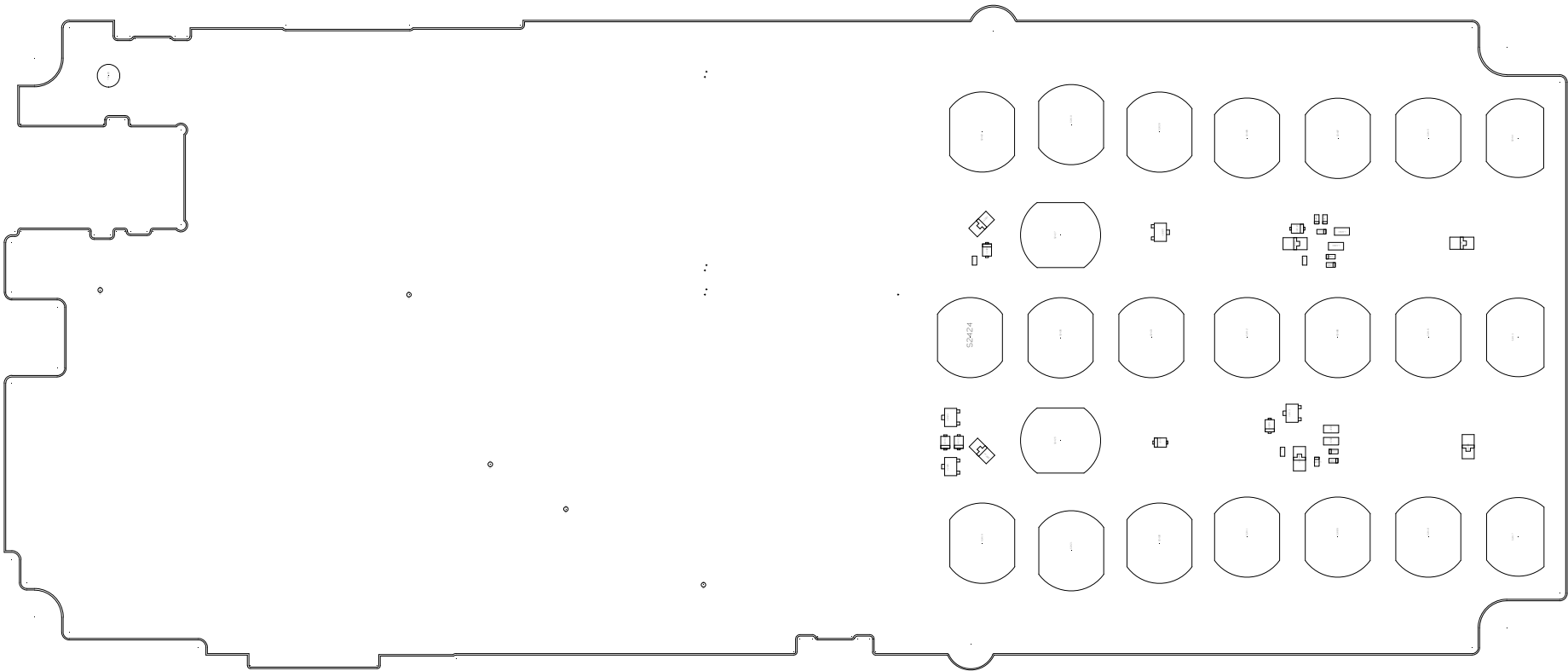
Document No.
1229-8006

Sheet
1(2)


CONFIDENTIAL

Copyright (c) 2002 Sony Ericsson Mobile Communications AB, All Rights Reserved

Secondary Side



CONFIDENTIAL

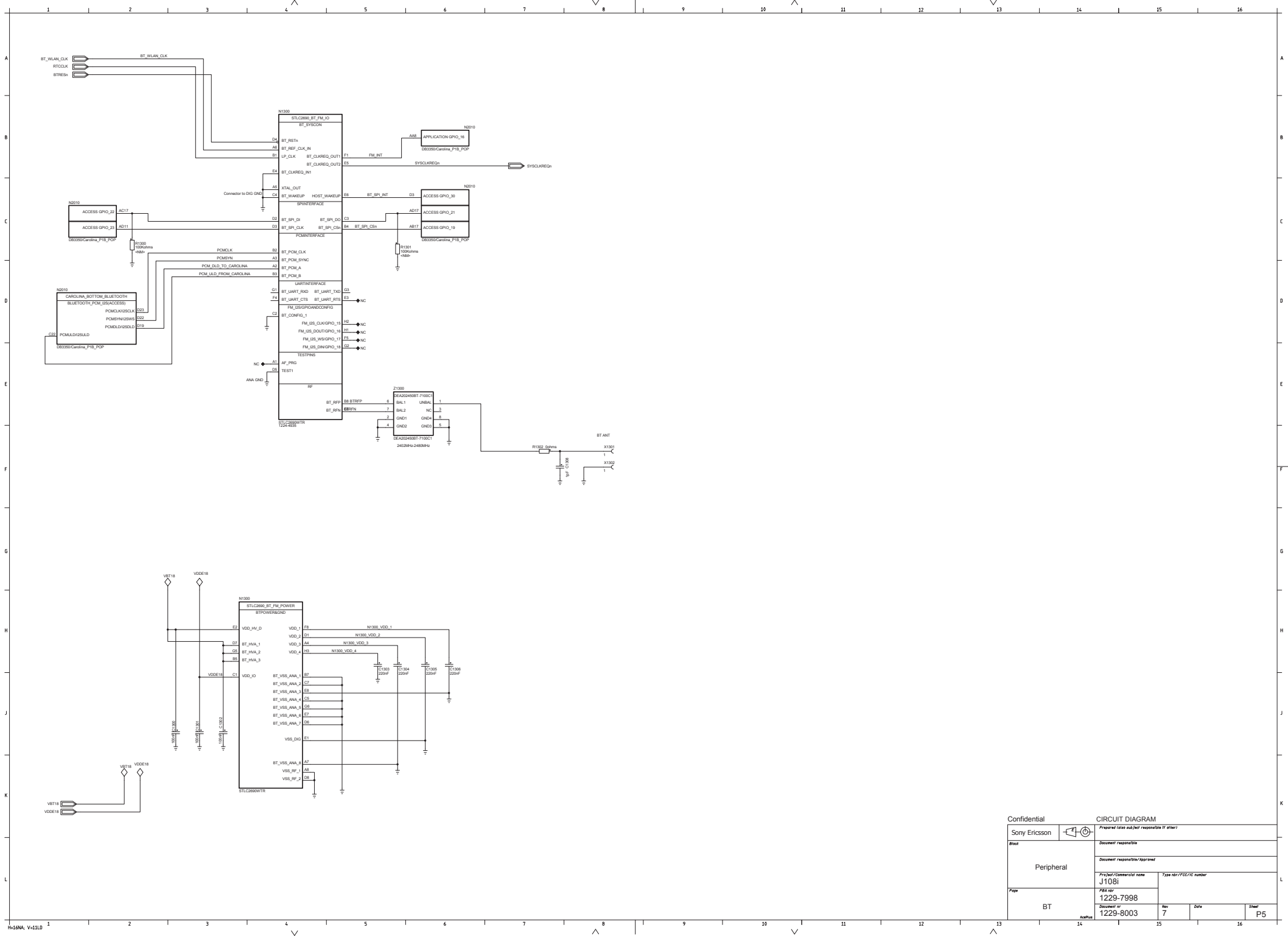
| | | | | | |
|---------------|--|---------------------------------------------------------------------------------------|------|----------------------------------------------|------|
| Sony Ericsson | |  | | Prepared (Also Subject Responsible if Other) | |
| Drawing Rules | | ISO | | Doc Responsible/Approved | Date |
| Tolerance | | | | Rev 6 | |
| Reference | | | | Product Name | |
| Scale | | Units | Size | Document No. | |
| | | mm | A3 | 1229-8006 | |
| | | | | Sheet 2 (2) | |



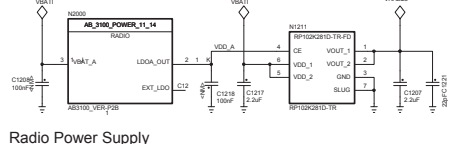




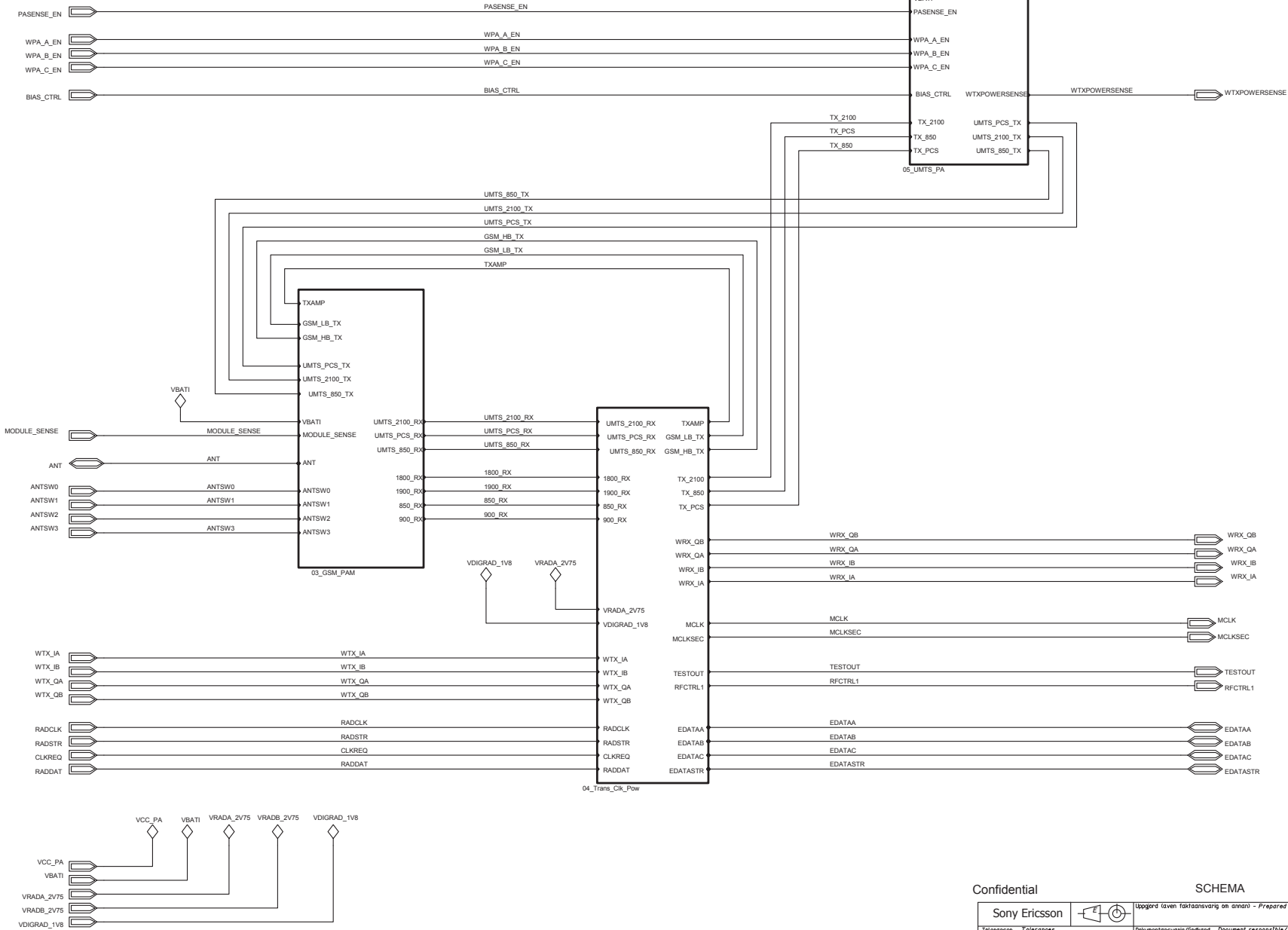


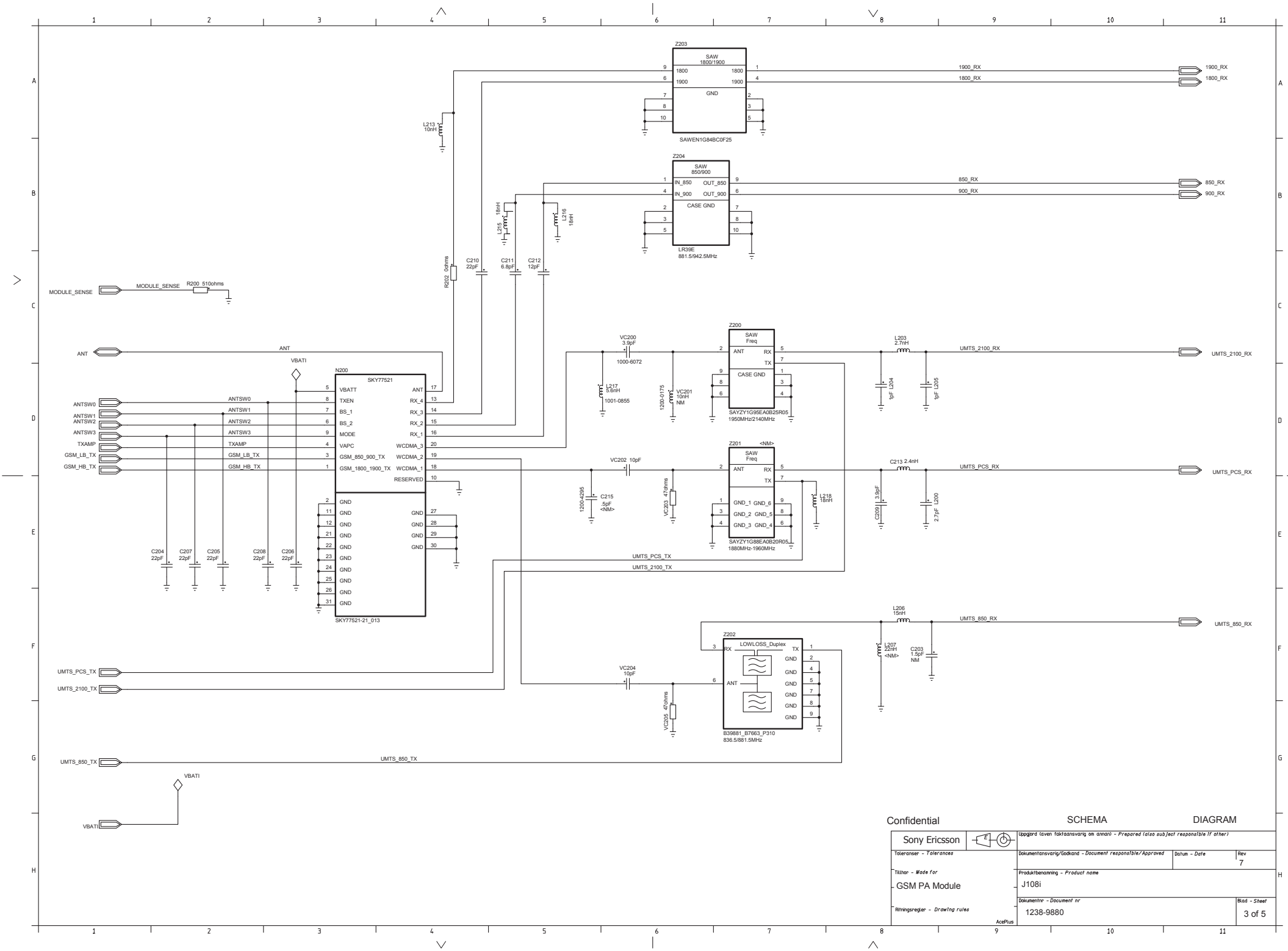


| | | | | | |
|---------------|--|----------------------------------------|--|------------------------|------|
| Confidential | | CIRCUIT DIAGRAM | | | |
| Sony Ericsson | | Prepared (does not represent TI ether) | | | |
| Doc# | | Document responsible | | | |
| Peripheral | | Document responsible/Approved | | | |
| | | Project/Commercial name J108i | | Type nbr/PCE/IC number | |
| Page | | P&T nbr 1229-7998 | | | |
| BT | | Document nr 1229-8003 | | Rev 7 | Date |
| | | Sheet P5 | | | |



.ZF 030 101/F PB1





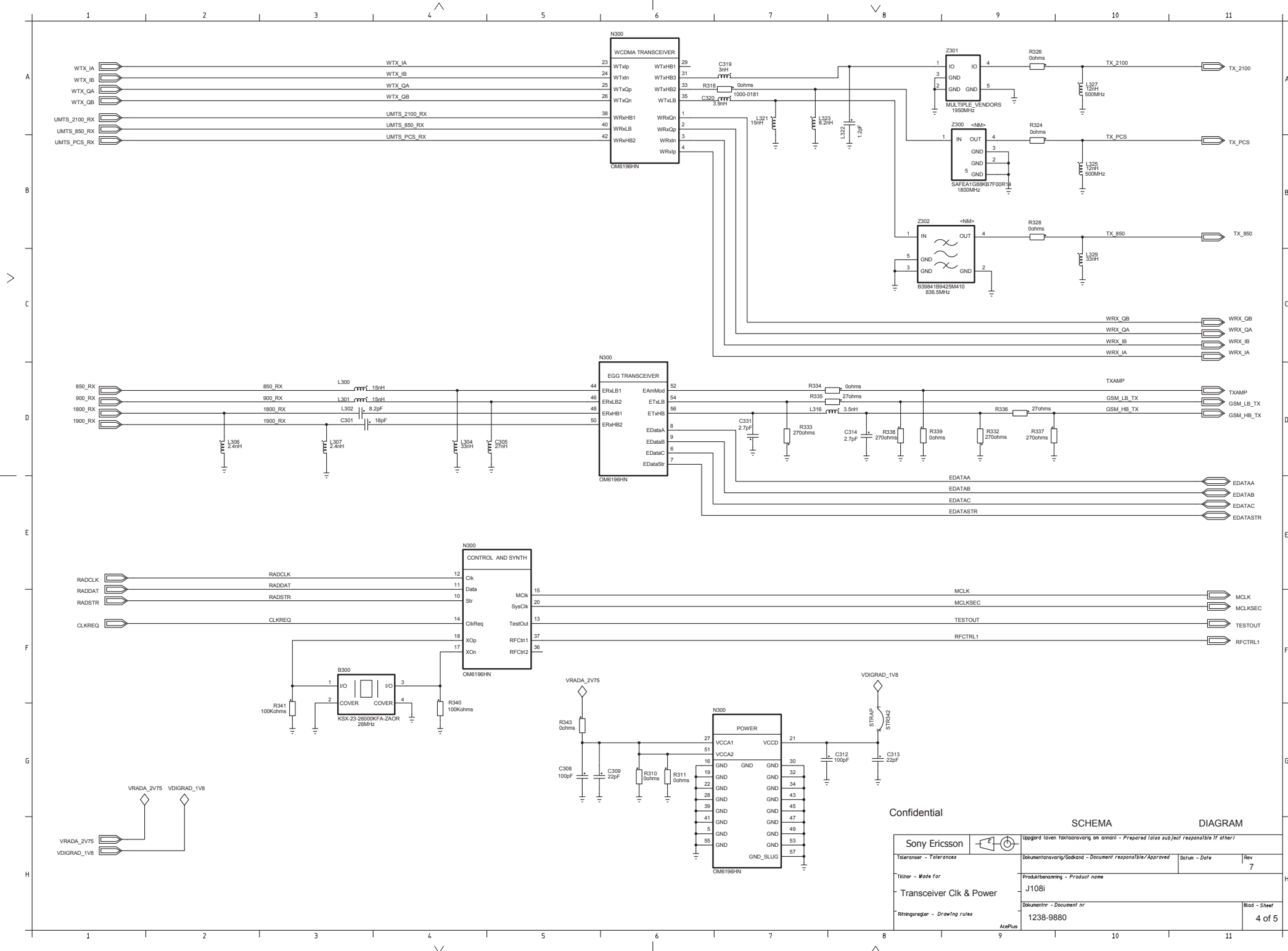
Confidential

SCHEMA

DIAGRAM

| | | | |
|--------------------------------|--|-------------------------------------------------------------------------------------|--|
| Sany Ericsson | | Upplagd (given faktasvaring an anon) - Prepared (also sub)ect responsible (f other) | |
| Toleranser - Tolerances | | Documentansvar/Godkänd - Document responsible/Approved | |
| Tillbar - Made for | | Datum - Date | |
| GSM PA Module | | Rev 7 | |
| Ritningsregler - Drawing rules | | Produktbenämning - Product name | |
| 1238-9880 | | J108i | |
| AcetPlus | | Ritningsregler - Document nr | |
| | | 1238-9880 | |
| | | Blad - Sheet | |
| | | 3 of 5 | |

LZF 030 102/F RB



Confidential

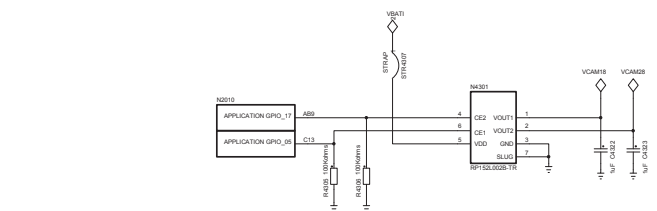
SCHEMA

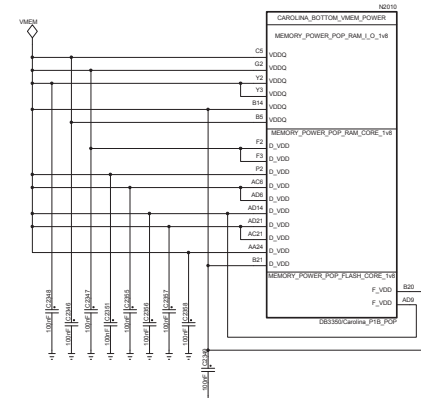
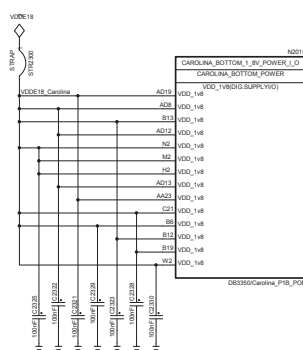
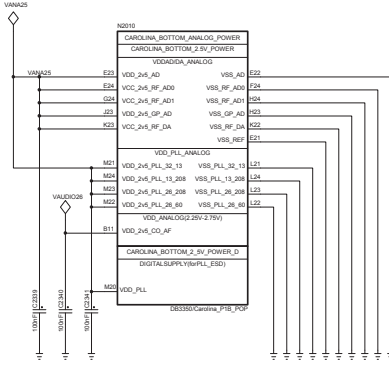
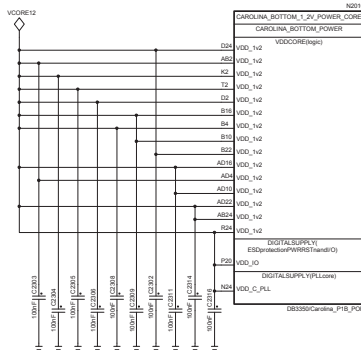
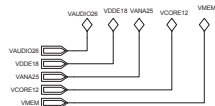
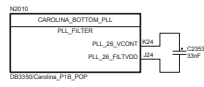
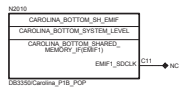
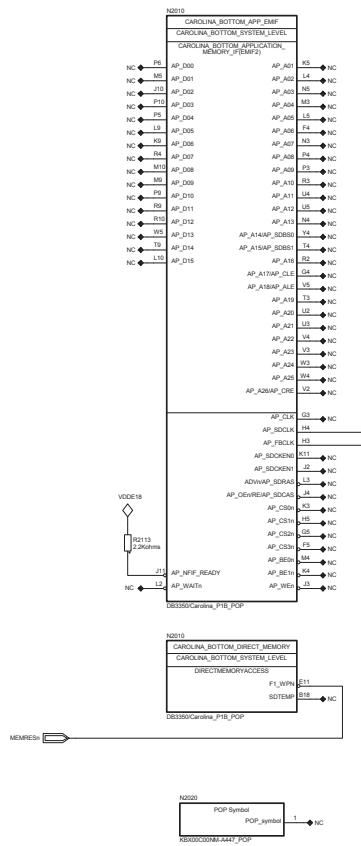
DIAGRAM

| | | | |
|----------------------------------------------------------------------------------------|--|----------------------------------------------------------|--|
| Uppgär (given färdigställning av annan) - Prepared (also subject responsible if other) | | | |
| Toleranser - Tolerances | | Documentansvarig/Godkänd - Document responsible/Approved | |
| Tillhör - Made for | | Datum - Date | |
| Transceiver Clk & Power | | Rev 7 | |
| Ritningsregler - Drawing rules | | Produktbenämning - Product name | |
| AcetPlus | | J108i | |
| | | Dokumentnr - Document nr | |
| | | 1238-9880 | |
| | | Blad - Sheet | |
| | | 4 of 5 | |

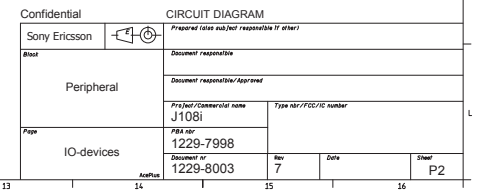
LZF 030 102/F RB

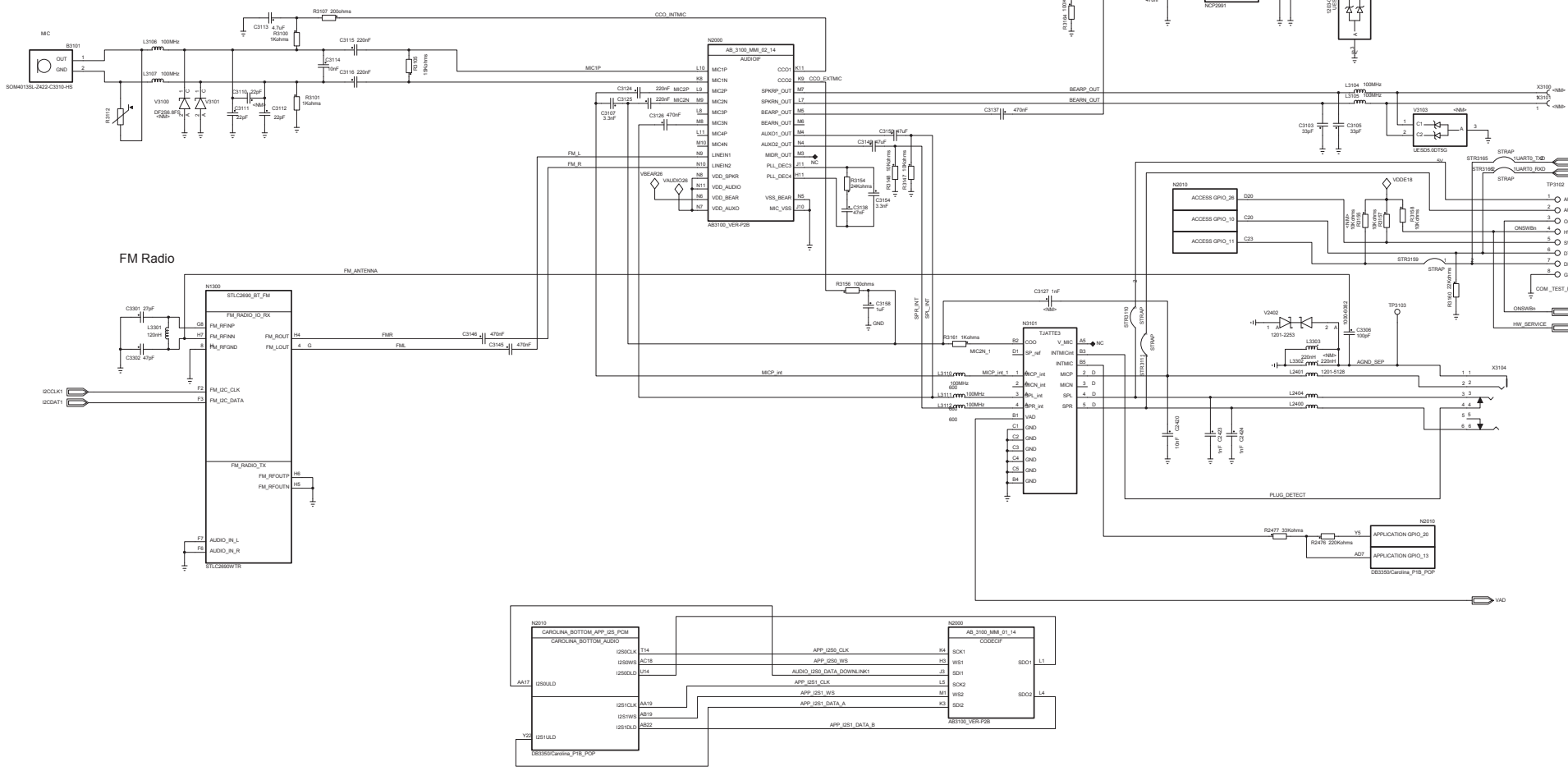






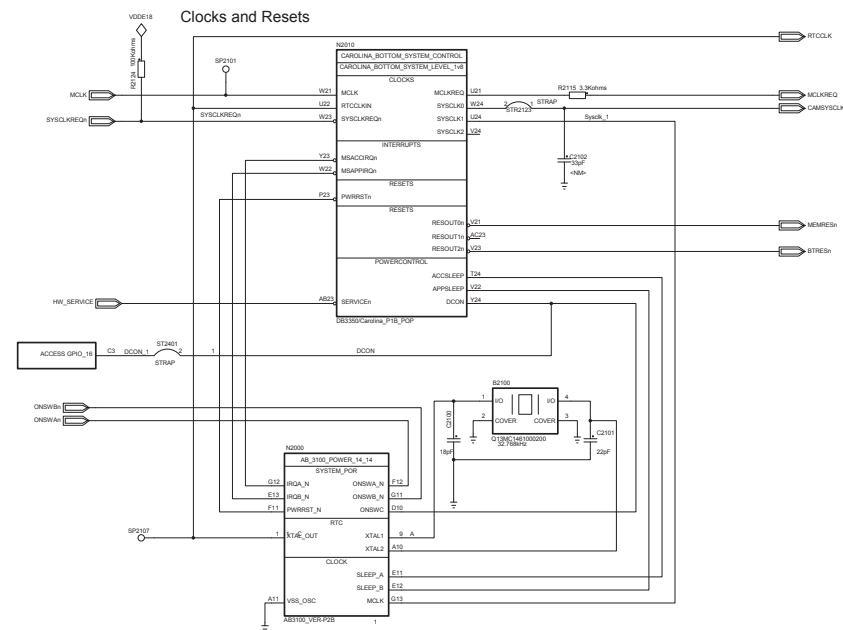
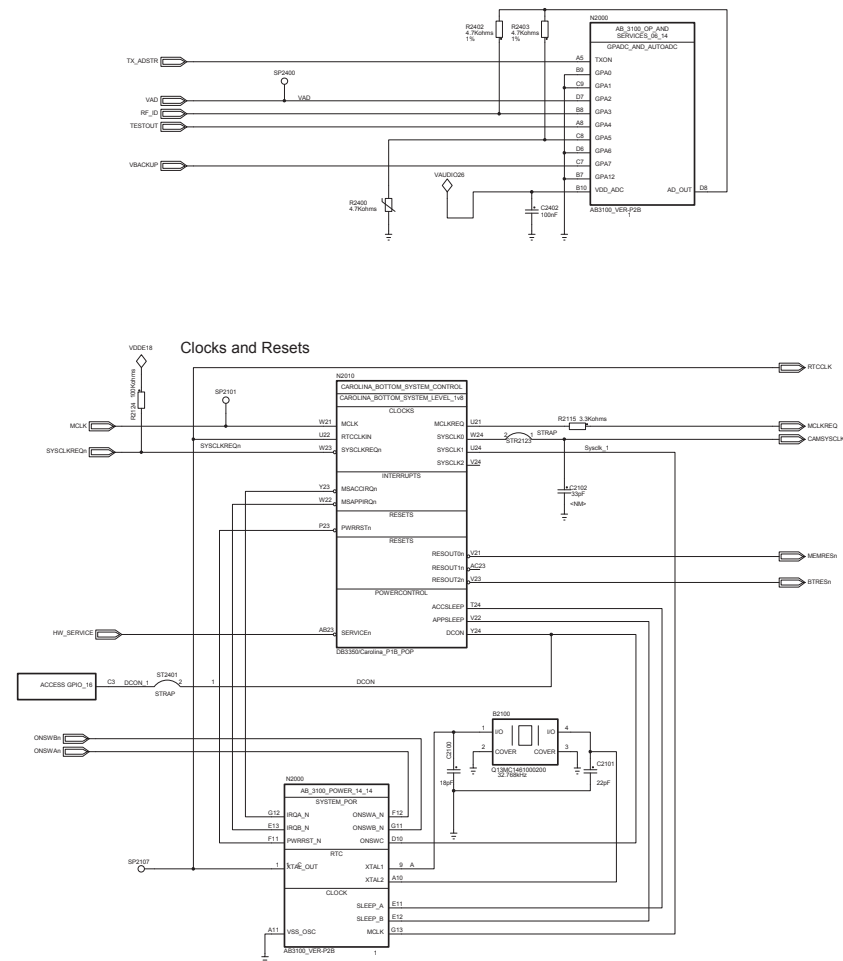
| | | | |
|---------------|--|----------------------------------------------|------------------------|
| Confidential | | CIRCUIT DIAGRAM | |
| Sony Ericsson | | Prepared (does not represent a final design) | |
| Best | | Document responsible | |
| Core | | Document responsible/approved | |
| Page | | Project/Commercial name | Type nbr/PEC/IC number |
| Memories | | J1081 | |
| | | Rev. no. | |
| | | 1229-7998 | |
| | | Document nr | |
| | | 1229-8003 | |
| | | Rev | Date |
| | | 7 | |
| | | Sheet | C2 |





L27 030 010/F REL

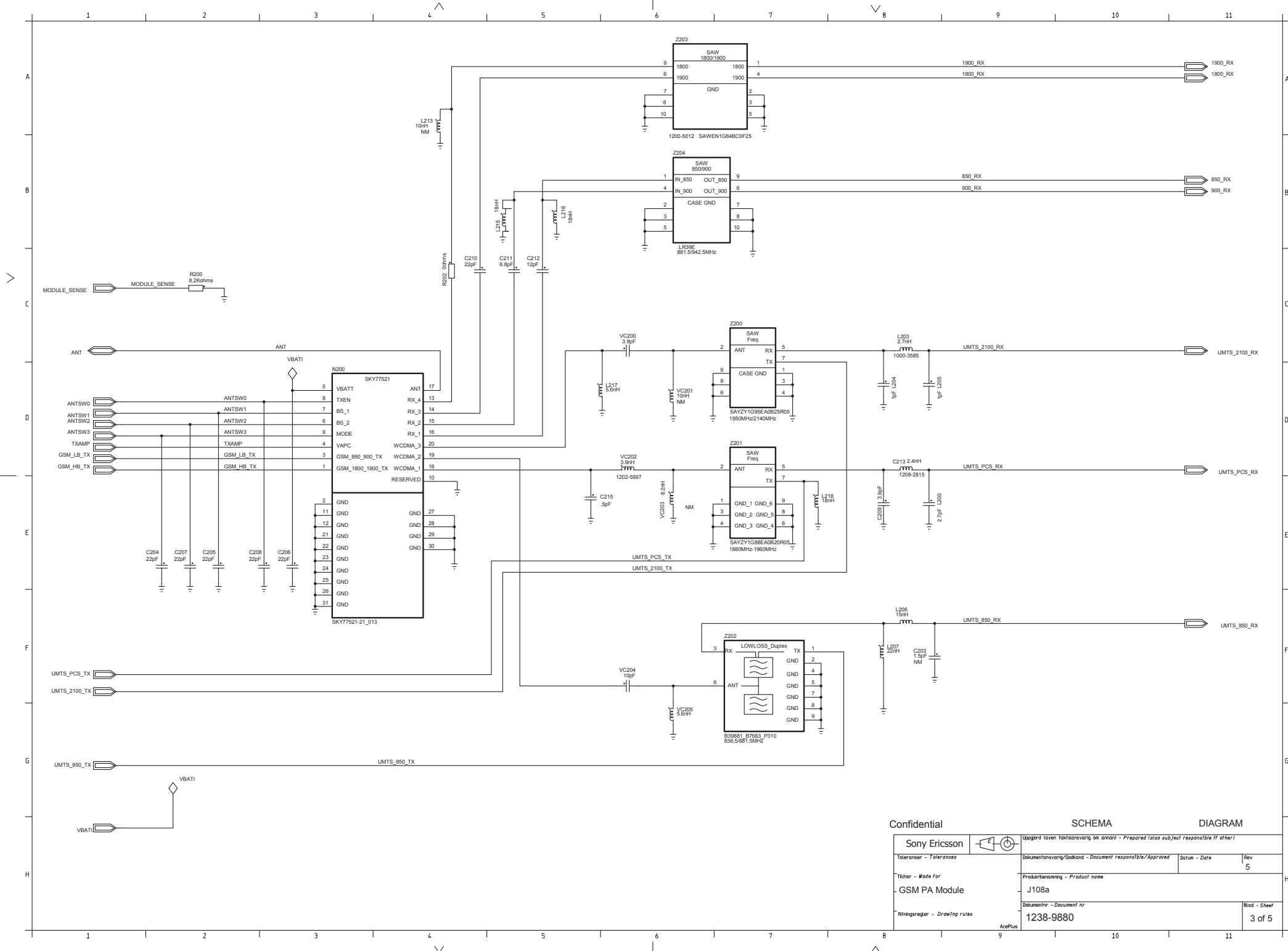
| | | | | | |
|---------------|--|----------------------------------------------|--|------------------------|-------|
| Confidential | | CIRCUIT DIAGRAM | | | |
| Sony Ericsson | | Prepared (date subject responsible if other) | | | |
| Sheet | | Document responsible | | | |
| Peripheral | | Document responsible/approved | | | |
| | | P13/Net/Commercial name | | Type nbr/PCE/IC number | |
| Page | | J108a | | | |
| Audio | | PBA nbr | | | |
| | | 1238-9375 | | | |
| | | Document nr | | Rev | Date |
| | | 1238-9880 | | 5 | |
| | | | | | Sheet |
| | | | | | P1 |











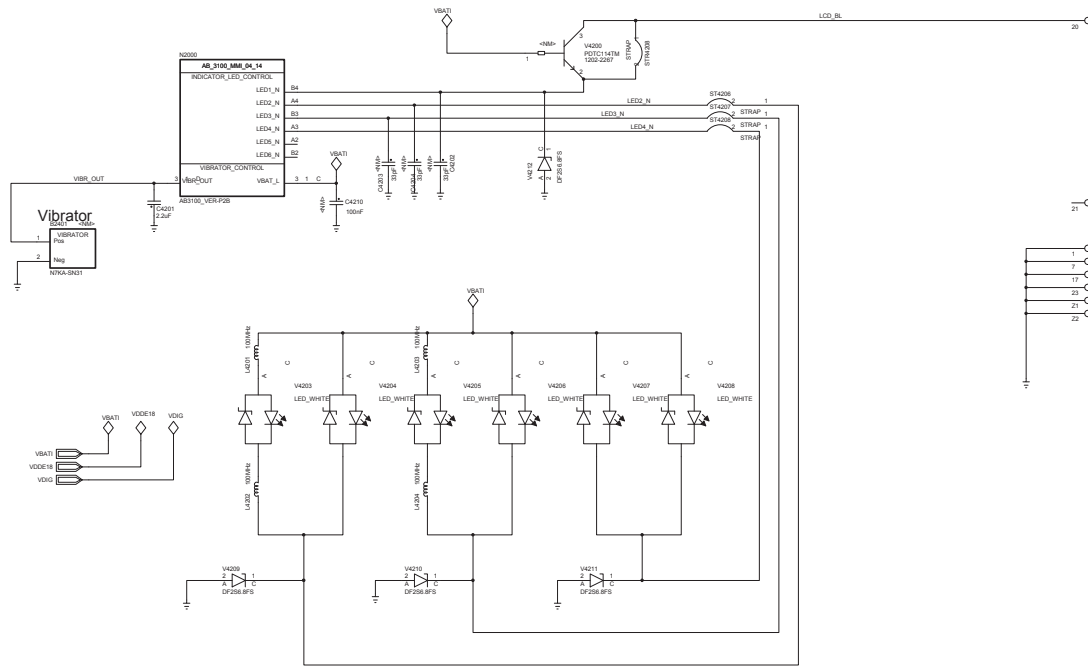
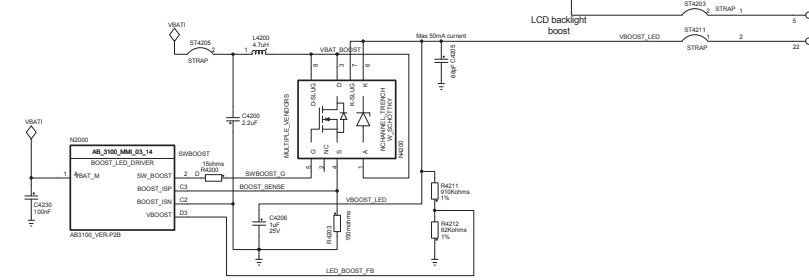
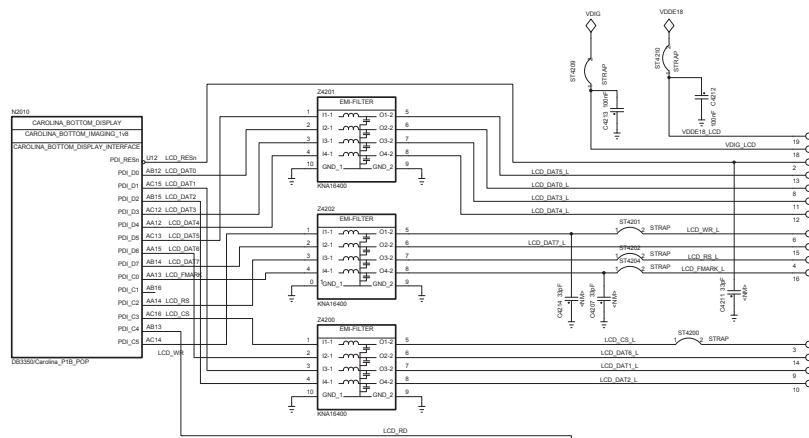
Confidential


SCHEMA

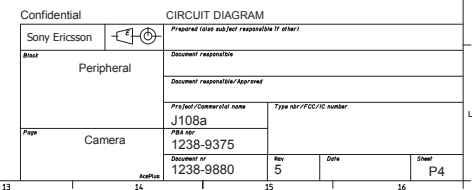
DIAGRAM

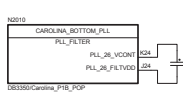
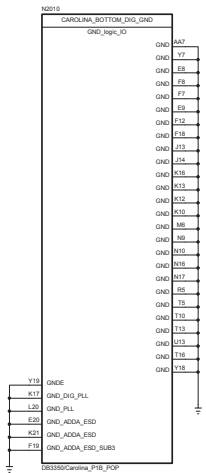
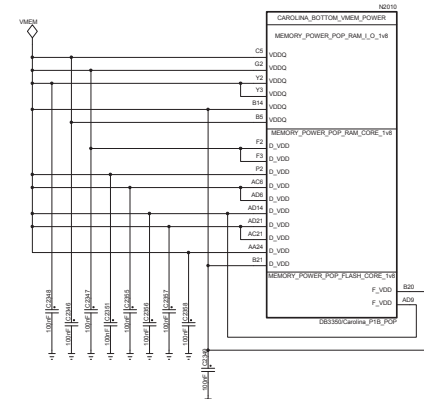
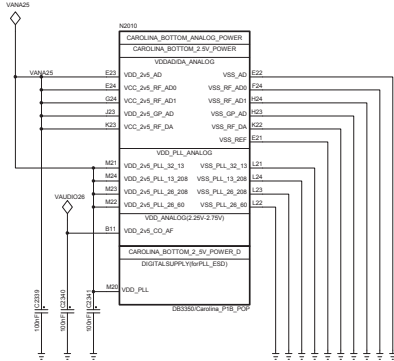
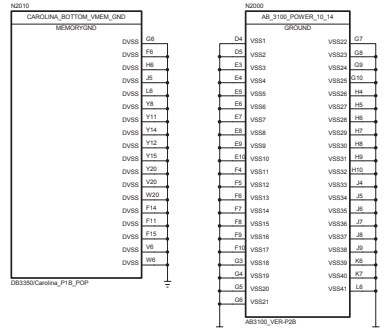
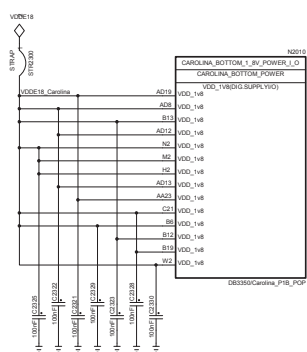
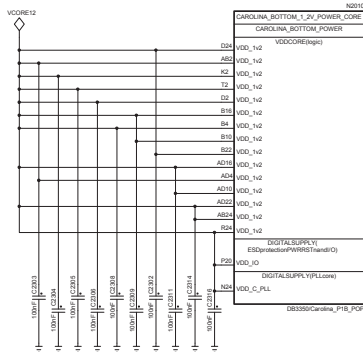
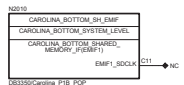
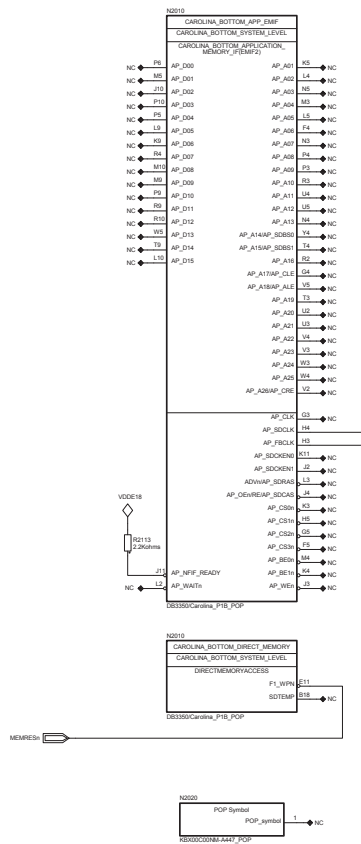
| | | | |
|--------------------------------|--|----------------------------------------------------------------------------------------|--|
| Sony Ericsson | | Uppgård (given faktansvaring an annan) - Prepared (also sub)ect responsible (if other) | |
| Toleranser - Tolerances | | Dokumentansvarig/Godkänd - Document responsible/Approved | |
| Tillbar - Made for | | Datum - Date | |
| GSM PA Module | | Rev 5 | |
| Ritningsregeln - Drawing rules | | Produktbenämning - Product name | |
| AcePlus | | J108a | |
| | | Dokumentnr - Document nr | |
| | | 1238-9880 | |
| | | Blad - Sheet | |
| | | 3 of 5 | |

LZF 030 102/F RB



| | | | | | | |
|---------------|--------|------------------------------------------------------------------------------------------------------------|--|------------------------|------|-------|
| Confidential | | CIRCUIT DIAGRAM | | | | |
| Sony Ericsson | | Prepared (see subsect responsible if other) | | | | |
| Boost | |  Document responsible | | | | |
| Peripheral | | Document responsible/Approved | | | | |
| Page | Optics | Project/Commercial name | | Type nbr/PEC/IC number | | |
| | | J108a | | | | |
| | | Part no: | | | | |
| Accession | | Document nr | | Rev | Date | Sheet |
| | | 1238-9880 | | 5 | | P3 |

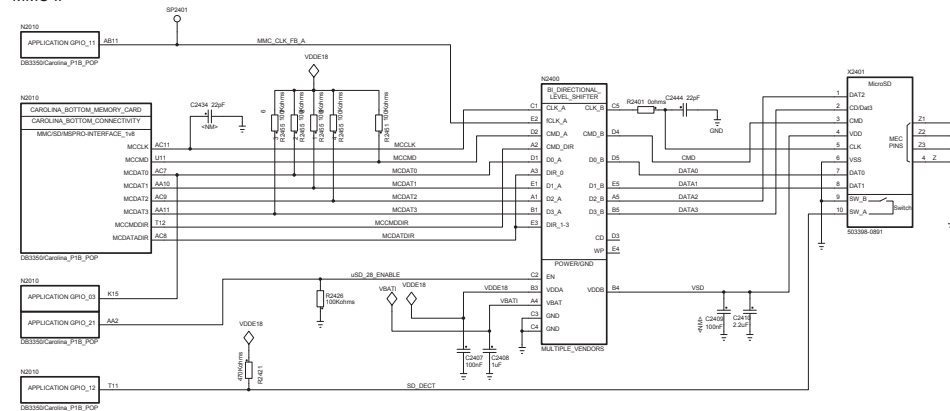




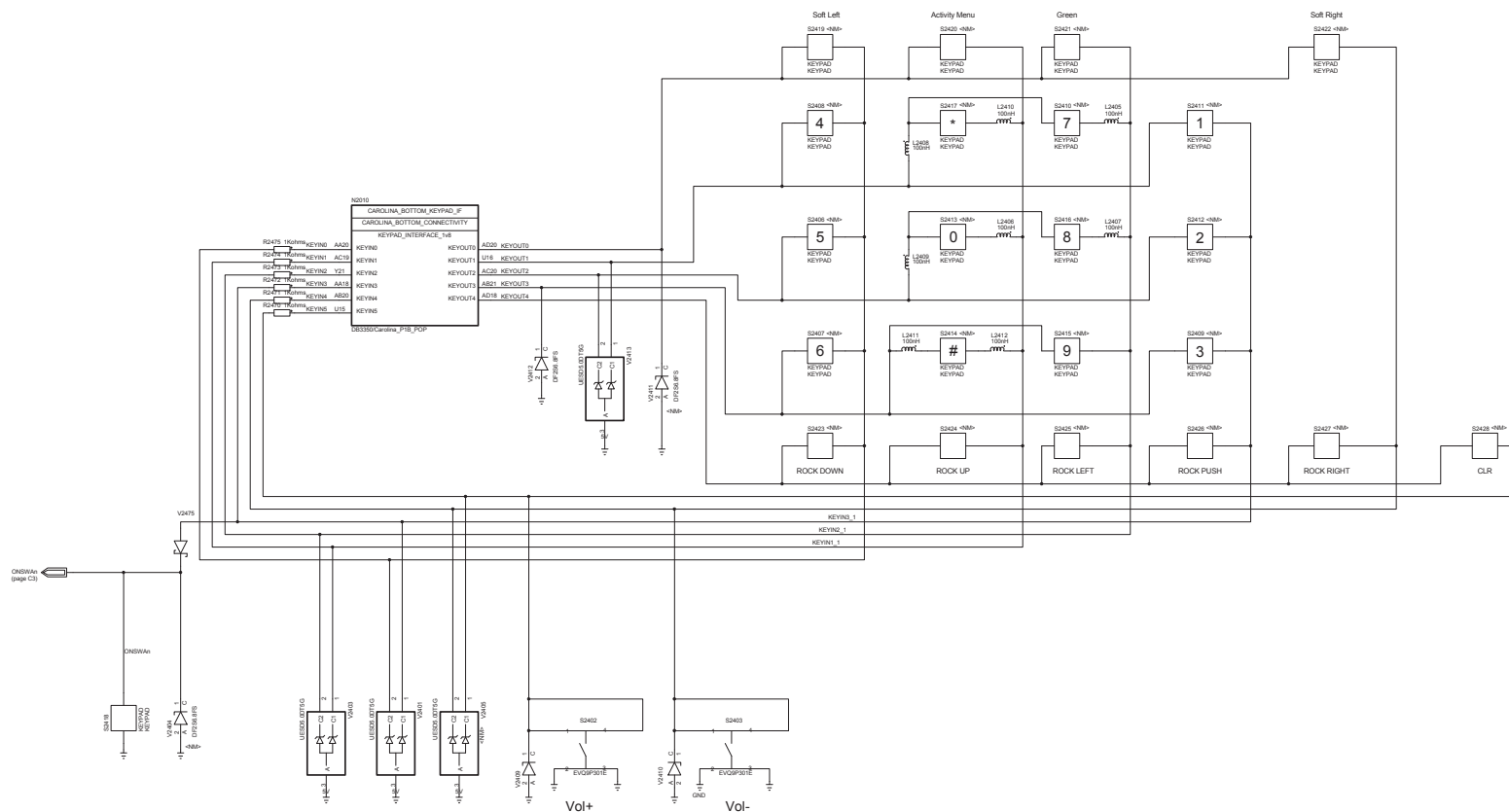
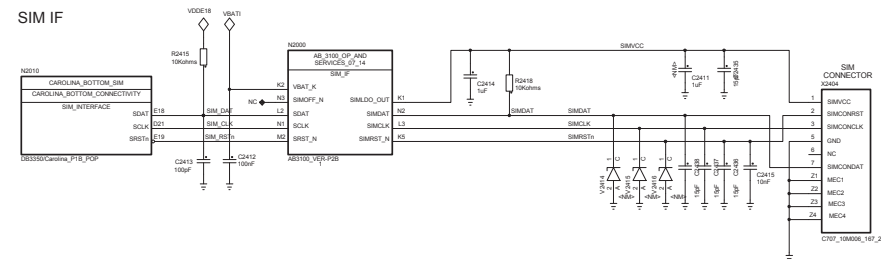
| | | | |
|---------------|--|----------------------------------------|------|
| Confidential | | CIRCUIT DIAGRAM | |
| Sony Ericsson | | Prepared (does not represent TI other) | |
| Core | | Document responsible/approved | |
| Page | | Type nbr/Commercial name | |
| Memories | | J108a | |
| | | Type nbr/Commercial name | |
| | | 1238-9375 | |
| | | Document n° | |
| | | 1238-9880 | |
| | | Rev | Date |
| | | 5 | |
| | | Sheet | C2 |

CPM

MMC IF



SIM IF



| | | | |
|---------------|--|------------------------------------------------|------------------------|
| Confidential | | CIRCUIT DIAGRAM | |
| Sony Ericsson | | Prepared (see subject responsibility if other) | |
| Doc | | Document responsible | |
| Peripheral | | Document responsible/approved | |
| Page | | Prj/Int/Commercial name | Type nbr/FCE/IC number |
| IO-devices | | J108a | |
| | | Part no | |
| | | 1238-9375 | |
| | | Document nr | |
| | | 1238-9880 | |
| | | Rev | Date |
| | | 5 | |
| | | Sheet | P2 |



Revision History

| Rev. | Date | Changes / Comments |
|------|------------|-------------------------|
| 1 | 2010-08-15 | 1 st release |
| 2 | 2011-02-23 | Update the repair level |